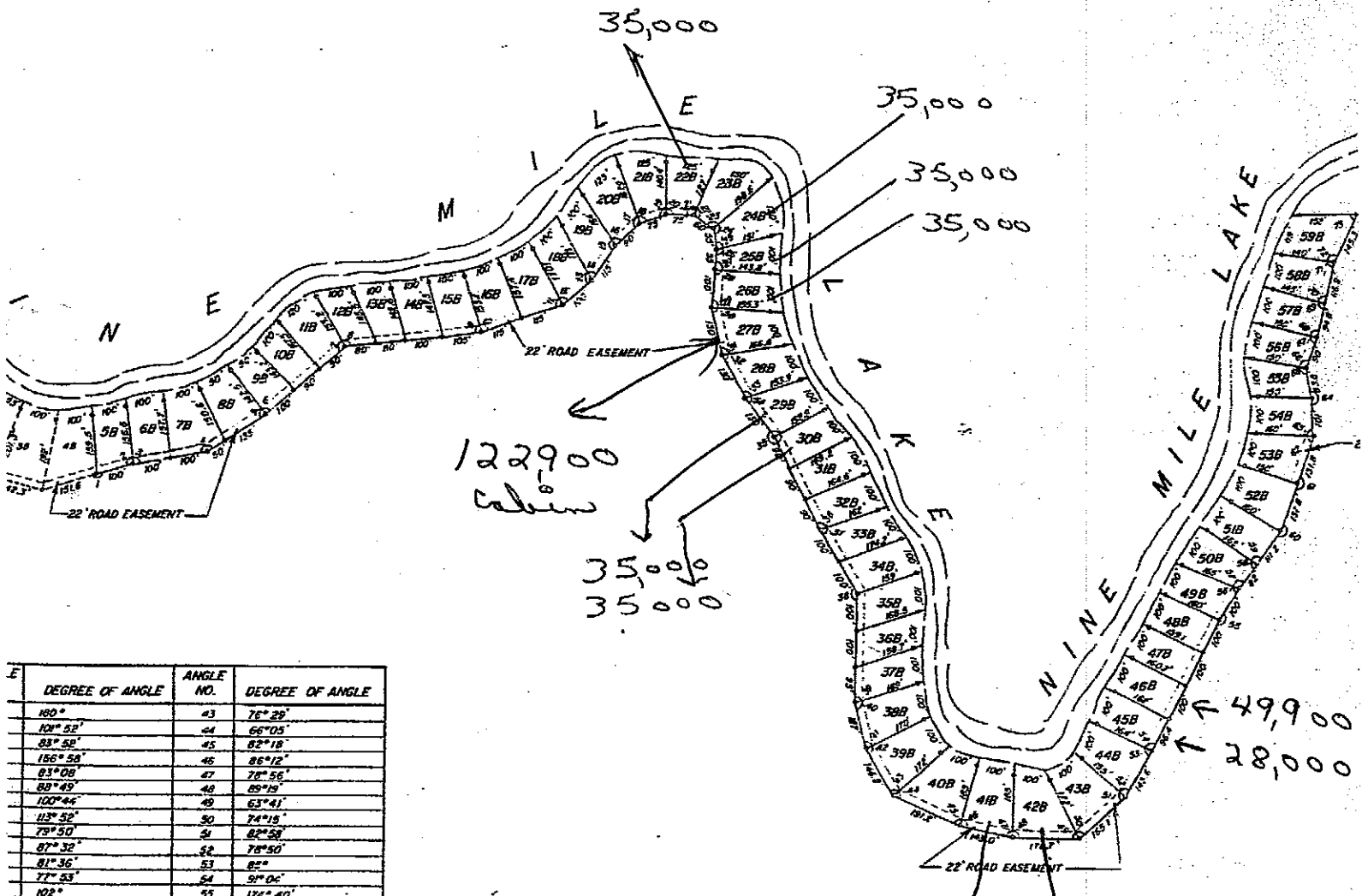
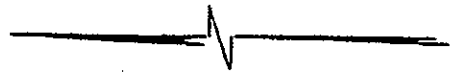


116



DEGREE OF ANGLE	ANGLE NO.	DEGREE OF ANGLE
180°	43	76° 29'
102° 52'	44	66° 05'
83° 58'	45	82° 18'
156° 58'	46	86° 12'
83° 08'	47	78° 56'
88° 49'	48	85° 19'
100° 44'	49	63° 41'
113° 52'	50	74° 15'
78° 50'	51	82° 28'
87° 32'	52	78° 50'
81° 36'	53	82°
77° 53'	54	91° 06'
102°	55	174° 40'
62° 07'	56	85° 36'
115° 12'	57	85° 04'
71° 48'	58	87° 33'
114° 38'	59	91° 56'
87° 52'	60	86° 03'
111° 22'	61	181° 15'
91° 02'	62	74° 21'
111° 13'	63	86° 05'
102° 53'	64	187° 23'
102° 50'	65	110° 02'
122° 24'	66	97° 12'
85° 34'	67	86° 24'
100° 39'	68	89° 09'
90° 03'	69	92° 46'
90° 36'	70	87° 15'
89° 11'	71	85° 59'
74° 55'	72	106° 14'
92° 44'	73	84° 27'
70° 33'	74	104° 45'
89° 21'		
72° 02'		
170° 26'		
97° 37'		
79° 27'		
48° 48'		
71° 18'		
93° 39'		
76° 47'		
87° 48'		

NOTE:  
1. ALL DISTANCES SHOWN ON THIS PLAT ARE SLOPE MEASUREMENTS.

49,900  
28,000  
28,000