

Plat of Nordquist Fourth Addition in Gov't Lot 1, Section 21, T126N, R55 West of the 5th P.M. in the County of Marshall, South Dakota.

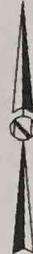
Being a Replat of a Portion of Gov't Lot 1 of the plat entitled: "Sigaty's
Subdivision Located in Section 21, T126N, R55W of the 5th P.M.,
Marshall County, South Dakota."

September 1998

Scale: 1"=150'

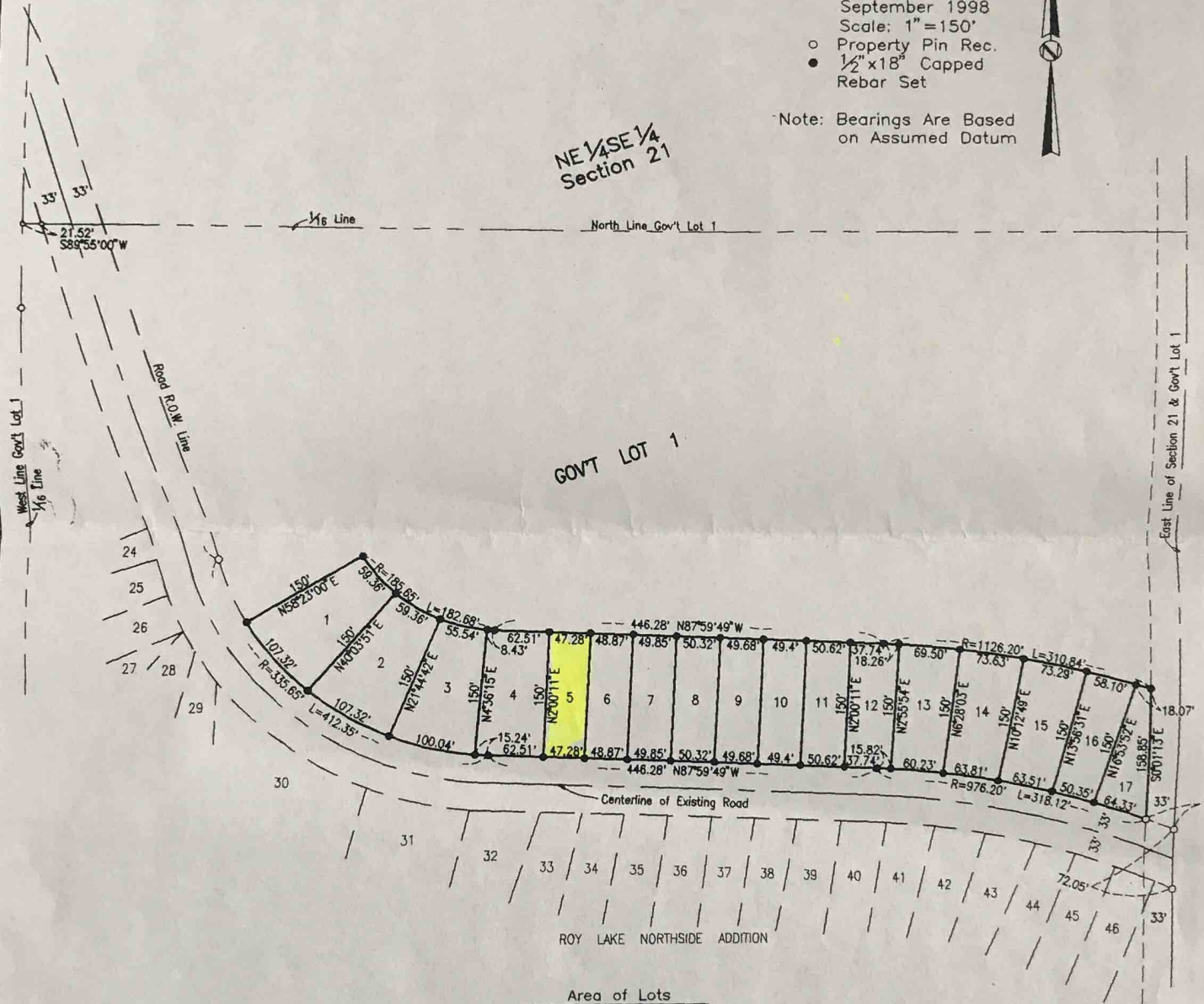
- Property Pin Rec.
- 1/2"x18" Capped Rebar Set

Note: Bearings Are Based on Assumed Datum



NE 1/4 SE 1/4
Section 21

GOV'T LOT 1



Area of Lots

Lot 1 =	0.29 Acre
Lot 2 =	0.29 Acre
Lot 3 =	0.27 Acre
Lot 4 =	0.26 Acre
Lot 5 =	0.16 Acre
Lot 6 =	0.17 Acre
Lot 7 =	0.17 Acre
Lot 8 =	0.17 Acre
Lot 9 =	0.17 Acre
Lot 10 =	0.17 Acre
Lot 11 =	0.17 Acre
Lot 12 =	0.19 Acre
Lot 13 =	0.22 Acre
Lot 14 =	0.24 Acre
Lot 15 =	0.24 Acre
Lot 16 =	0.19 Acre
Lot 17 =	0.14 Acre

Note: Dimension Lengths Shown along Curves are Arc Lengths