

74

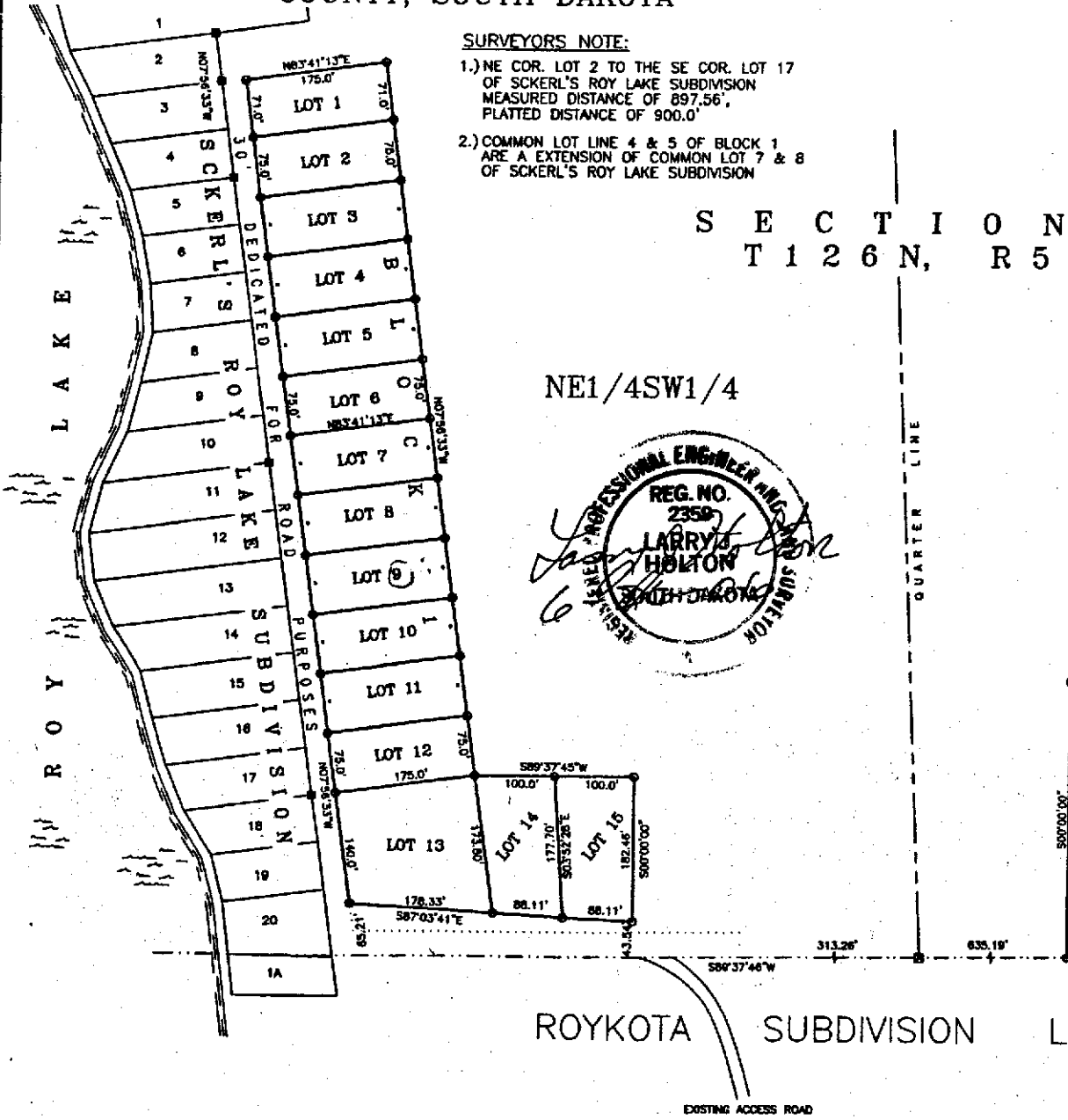
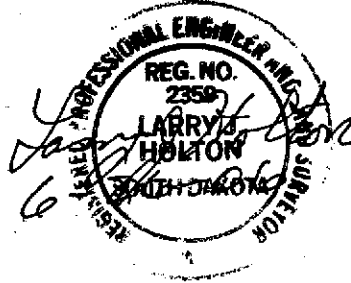
PLAT OF: LOTS 1-15 IN BLOCK 1 OF GANGLE'S SUBDIVISION
 SECTION 27, T126N, R55W OF THE 5TH P.M., MA
 AND
 SCOTT'S ADDITION IN GOV'T LOT 4 OF SECTIC
 COUNTY, SOUTH DAKOTA

SURVEYORS NOTE:

- 1.) NE COR. LOT 2 TO THE SE COR. LOT 17 OF SCKERL'S ROY LAKE SUBDIVISION MEASURED DISTANCE OF 897.56', PLATTED DISTANCE OF 900.0'
- 2.) COMMON LOT LINE 4 & 5 OF BLOCK 1 ARE A EXTENSION OF COMMON LOT 7 & 8 OF SCKERL'S ROY LAKE SUBDIVISION

S E C T I O N
 T 1 2 6 N, R 5 5 W

NE1/4SW1/4



DRAWN: 06/