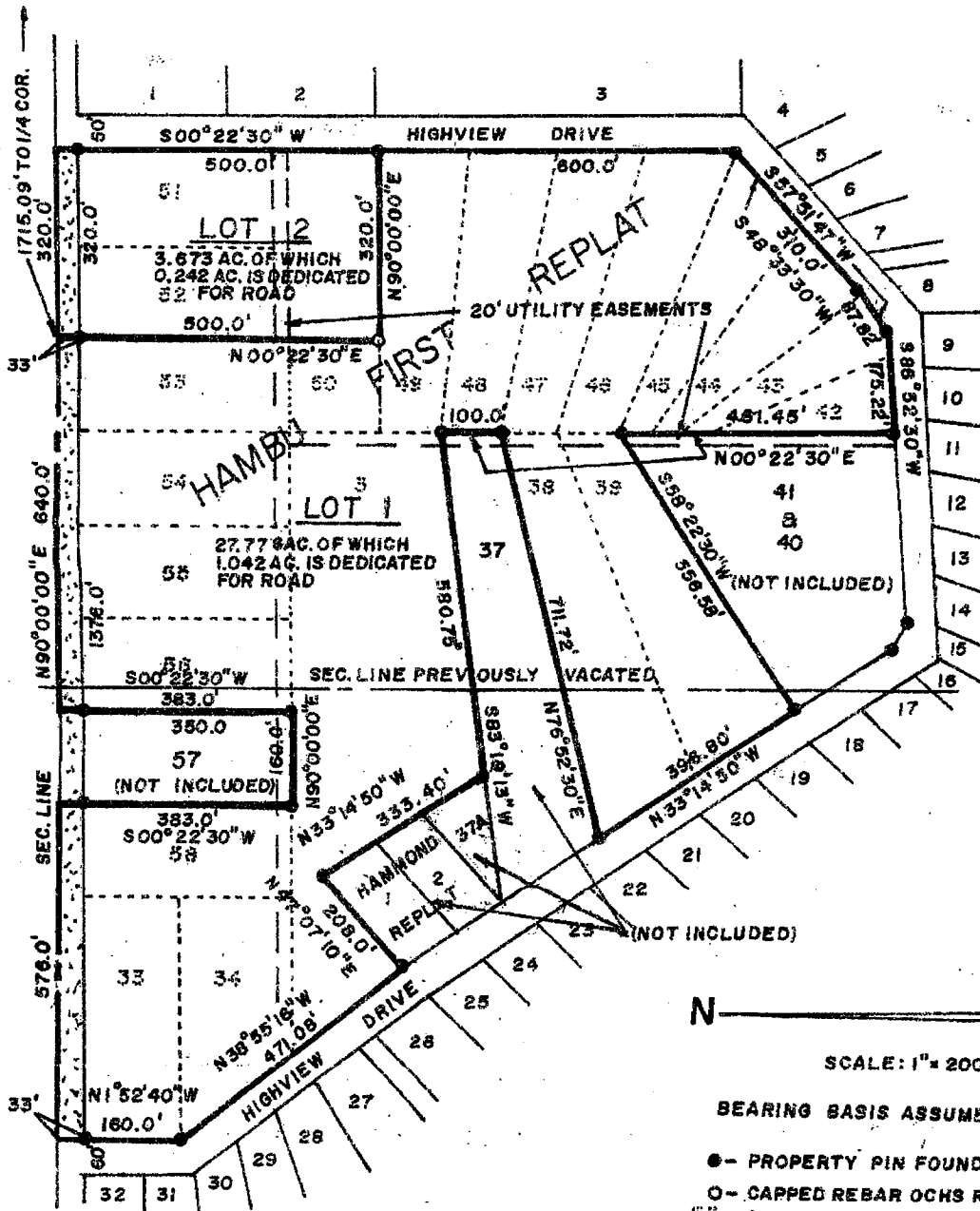


HAMBU FIRST REPLAT IN HIGHVIEW SUBDIVISION IN THE  
 NE1/4 OF SEC. 24, T.123N., R.55W. AND THE NW1/4 OF SEC. 19,  
 T.123N., R.54W. OF THE 5TH P.M., ALL IN DAY COUNTY, SOUTH  
 DAKOTA

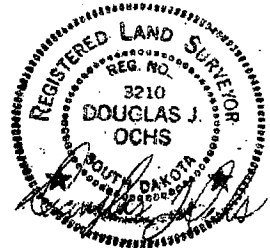


N ————

SCALE: 1" = 200'

BEARING BASIS ASSUMED

- - PROPERTY PIN FOUND
- - CAPPED REBAR OCHS RLS 3210
- ⊖ - DENOTES VACATED LOT
- ⊗ - DEDICATED FOR ROAD THIS PLAT



PREPARED BY:  
 STELLNER ENGINEERING COMPANY  
 P.O. BOX 921  
 ABERDEEN, SD 57402-0921  
 605-225-0583

6-8-2010