

CRB

# Plat of

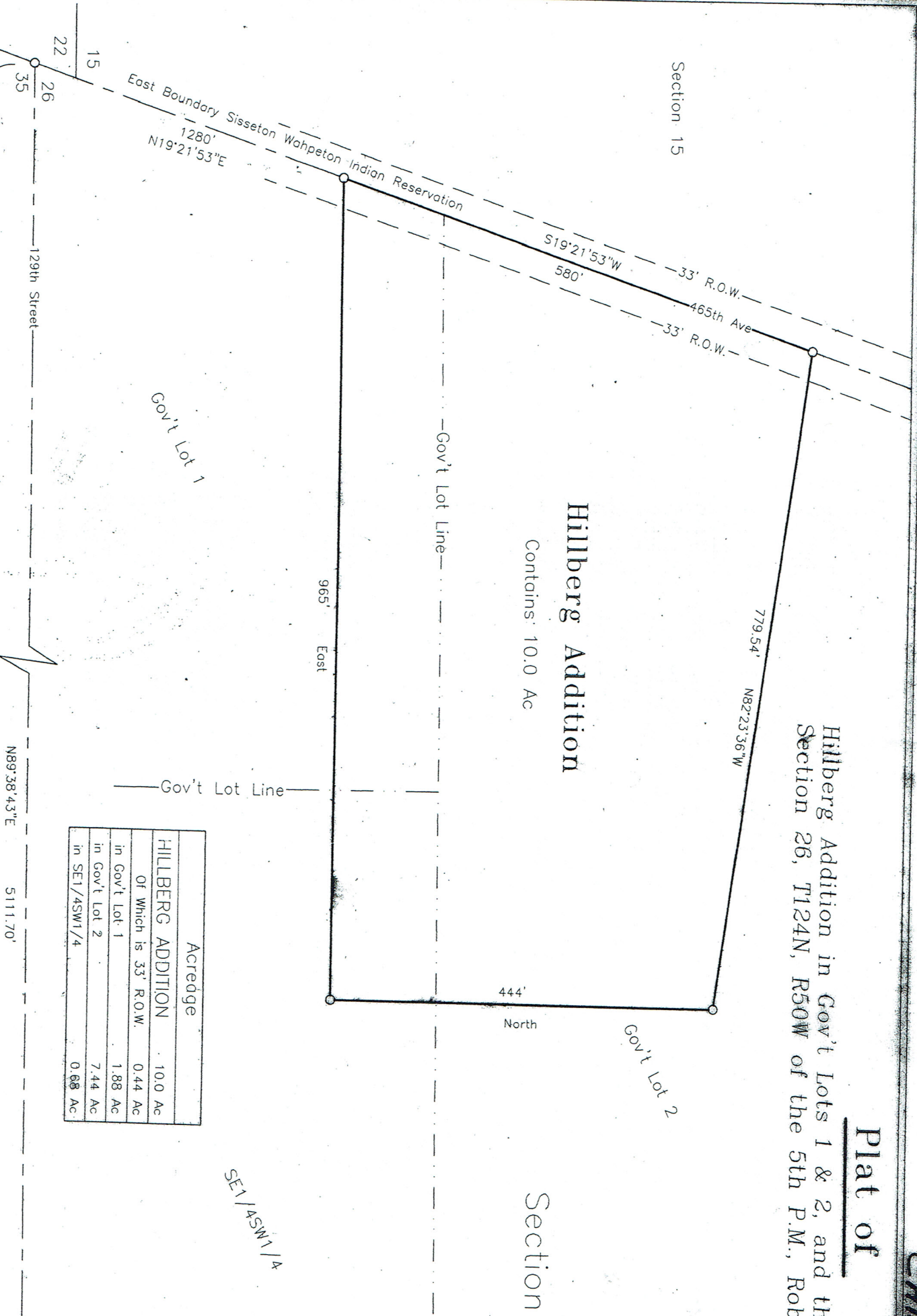
Hillberg Addition in Gov't Lots 1 & 2, and the Section 26, T124N, R50W of the 5th P.M., Robert

Section 15

Section 2

## Hillberg Addition

Contains 10.0 Ac



Acredge	
HILLBERG ADDITION	10.0 Ac
Of Which is 33' R.O.W.	0.44 Ac
in Gov't Lot 1	1.88 Ac
in Gov't Lot 2	7.44 Ac
in SE1/4SW1/4	0.68 Ac

SE1/4SW1/4

NRCS Capped Iron Monument LS 4423

ROBERTSON ENGINEERS