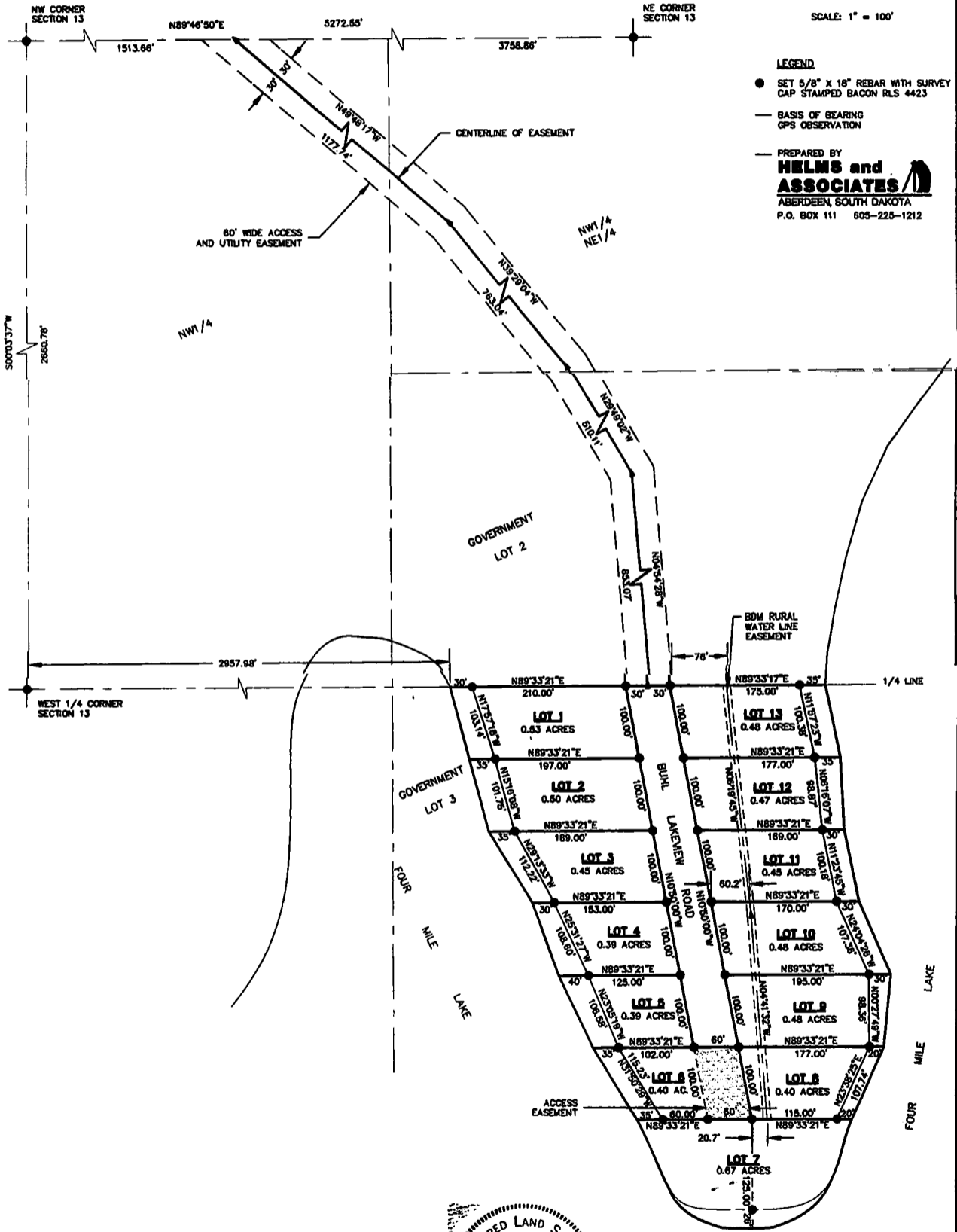


# PLAT OF BUHL FOUR MILE LAKE SUBDIVISION IN GOVERNMENT LOTS 2 AND 3 AND NW1/4 AND NW1/4 NE1/4 OF SECTION 13-T126N-R56W OF THE 5TH P.M. MARSHALL COUNTY, SOUTH DAKOTA.



SCALE: 1" = 100'



**LEGEND**

- SET 5/8" X 16" REBAR WITH SURVEY CAP STAMPED BACON RLS 4423
- BASIS OF BEARING GPS OBSERVATION
- PREPARED BY **HELMS and ASSOCIATES** ABERDEEN, SOUTH DAKOTA P.O. BOX 111 605-225-1212



3-438-439 slide # 117