

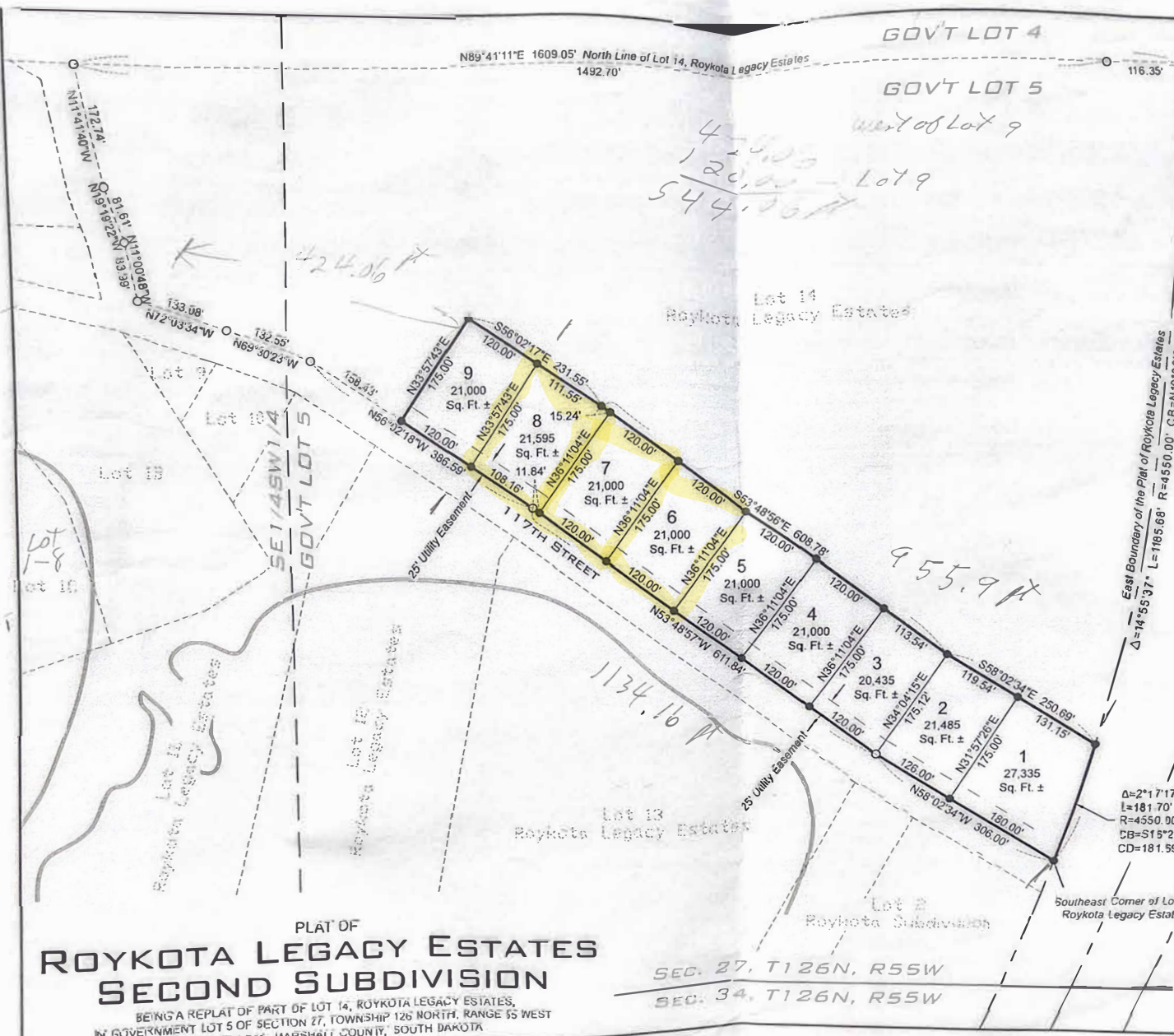
Aug 10-1st Hearing  
Aug 22-2nd Hearing  
Sept 12-Final

4-000  
120,000 - Lot 9  
544,000

424.06 ft

955.9 ft

1134.16 ft



EASEMENTS OF RECORD

DOCUMENT NO 31945  
20' ELECTRIC LINE EASEMENT  
BLANKETING OVER GOVERNMENT  
LOT 5.

DOCUMENT NO 41930  
30' WATER LINE EASEMENT  
BLANKETING OVER LOTS 1, 3 & 4,  
ROYKOTA SUBDIVISION.



BASIS OF BEARING  
PLAT OF ROYKOTA LEGACY ESTATES

LEGEND

- = CORNER MARKED WITH A 5/8" x 18" SMOOTH IRON PIN WITH ALUMINUM CAP MARKED "LS 7660"
- = EXISTING OR FOUND CORNER MONUMENT
- 1 = LOT NUMBER
- = PLAT BOUNDARY LINE
- = NEW PROPERTY LINE
- - - = EXISTING PROPERTY LINE
- - - = NEW EASEMENT LINE
- - - = EXISTING EASEMENT LINE

Δ=2°17'17"  
L=181.70'  
R=4550.00'  
CB=S15°21'40"W  
CD=181.59'

Southeast Corner of Lot 14, Roykota Legacy Estates

PLAT OF  
**ROYKOTA LEGACY ESTATES  
SECOND SUBDIVISION**

BEING A REPLAT OF PART OF LOT 14, ROYKOTA LEGACY ESTATES,  
IN GOVERNMENT LOT 5 OF SECTION 27, TOWNSHIP 126 NORTH, RANGE 55 WEST  
OF THE 5TH P.M., MARSHALL COUNTY, SOUTH DAKOTA

**INTERSTATE  
ENGINEERING**

Professionals you need, people you trust.

Interstate Engineering, Inc.  
P.O. Box 597  
1999 4th St. N.  
Wahpeton, ND 58074-0597  
Ph: (701) 642-5521  
Fax: (701) 642-5215  
www.interstateeng.com  
Offices in North Dakota, Minnesota,  
Montana and South Dakota