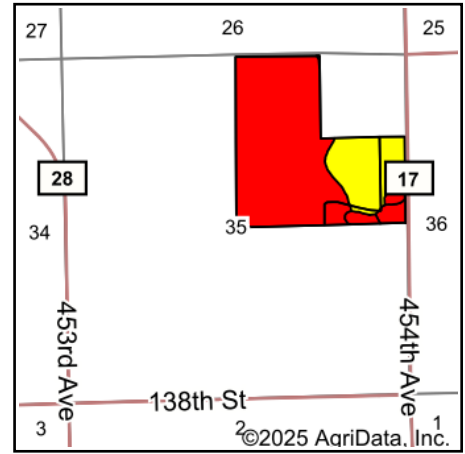
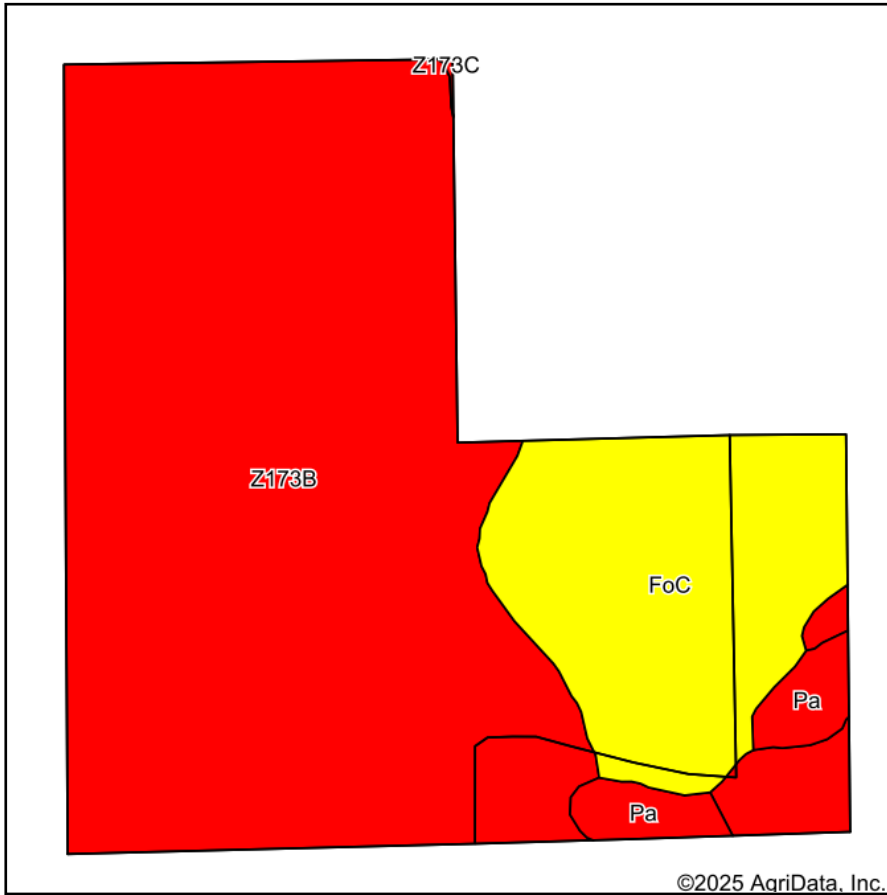


# Soils Map



State: **South Dakota**  
 County: **Roberts**  
 Location: **35-123N-52W**  
 Township: **Alto**  
 Acres: **118.52**  
 Date: **9/29/2025**

Dakota View  
 Realty & Auctions  
 DakotaViewRealty.com

Maps Provided By:

**surety**  
 CUSTOMIZED ONLINE MAPPING  
 © AgriData, Inc. 2023 www.AgriDataInc.com



Area Symbol: SD109, Soil Area Version: 25

Code	Soil Description	Acres	Percent of field	PI Legend	Non-Irr Class *c	Range Production (lbs/acre/yr)	Productivity Index	Corn Bu	Soybeans Bu	*n NCCPI Soybeans
Z173B	Renshaw-Sioux complex, coteau, 2 to 6 percent slopes	89.89	75.8%		IVs	2393	34			28
FoC	Forman-Aastad loams, 6 to 9 percent slopes	24.72	20.9%		IIIe	3707	69	69	26	53
Pa	Parnell silty clay loam	3.85	3.2%		Vw	6284	31	29	11	8
Z173C	Renshaw-Sioux complex, coteau, 6 to 9 percent slopes	0.06	0.1%		IVe	2343	28			27
Weighted Average					3.82	2793.4	41.2	15.3	5.8	*n 32.6

\*n: The aggregation method is "Weighted Average using all components"

\*c: Using Capabilities Class Dominant Condition Aggregation Method